

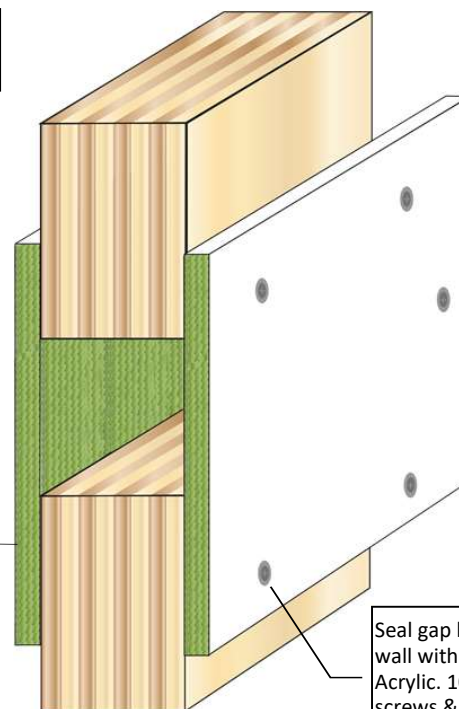
Protecta FR Board Solid Timber or CLT Wall 100mm Blank Seal or Linear Gap up to 600mm

Installation Instructions

1. Before installing Protecta® FR Board ensure that the surface of all service penetrations and surrounding construction is free from all loose contaminants, dust and grease.
2. The FR Board may be 50mm or 60mm with coated side facing outwards.
3. Cut the required boards to suit the aperture dimensions.
4. The FR Board must oversail the aperture by 100mm and be bonded to the wall with a bead of Protecta® FR Acrylic. Fix with 100mm wood screws and penny washers at 300mm centres 50mm in from edge.
5. All joints, gaps or imperfections in the installed seal must be filled with Protecta® FR Acrylic on both sides.
6. Protecta® FR Board can be over-painted with most emulsion or alkyd (gloss) paints.

Maximum gap
600mm

1 layer 50mm or 60mm FR
Board each side of wall



Seal gap between board/
wall with bead of FR
Acrylic. 100mm wood
screws & penny washers
at ≤ 300mm centres

System/FPA Register ID# FC166

Products	Protecta FR Board Protecta FR Acrylic
Application	Fire stopping of blank seals or linear gaps in timber walls
Construction	Minimum wall thickness of 100mm and comprise solid timber or CLT with a minimum density of 510kg/m ³

Fire & Sound classification

Protecta FR Board pattress fixed to each side of the wall, coated side facing outwards. Boards may be 50mm 1-S or 60mm 2-S

FRR -/120/120

Smoke-safe (<0.1m³/h smoke leakage at 200Pa)

Sound reduction (seal only)

STC 64

As a part of our policy of on-going product development and testing, we reserve the right to modify, alter or change product specifications without giving notice. All information contained in this document is given in good faith and is provided for guidance only. Any drawings provided are for illustrative purposes only. As Polyseam has no control over the methods or competence of installation and of prevailing site conditions, no warranties, expressed or implied, is intended to be given as to the actual performance of the product mentioned or referred to herein and no liability whatsoever will be accepted for any loss, damage or injury arising from the use of the information given.

Sheet size: A4	Drawn date & no: 19/8/21
--------------------------	-----------------------------

Scale: NTS	Drawn by: K.B
----------------------	------------------